

Want to support this work?

Everyone can get involved in fundraising!
People from all walks of life help The RISE Trust by fundraising. Staff, parents, children and the general public get involved in our cake sales, raffles and events to raise funds and the awareness of the work that we do as a trust. Organisations nominate The RISE at events such as PRIDE and charity events. People can also organise their own ways of raising funds for us.

Financial support

We can provide food vouchers in times of emergency and signpost parents to support.

Volunteering

Many of our services and sessions rely on volunteer support - Mentor Me and our Contact Centre in particular. Volunteering is a great way to meet new people, receive free training, learn new skills and support your community. It is also a great way for families to access future work or training opportunities. If you would like to get involved please call us on 01249-463040.

The RISE Trust is a not for profit community charity.
Everything donated helps us provide quality services to our local families and makes a huge difference

The Rise Trust Community Hub
The Oaks
Chippenham
Wiltshire
SN15 1DU



Details of all our services and how to access them can be found on our website and social media pages as well as by phoning the hub



The RISE Trust



the_rise_trust



www.therisetrust.org

All information was correct at time of printing
July 2024



The services provided by The RISE Trust changes lives ... and you can be a part of it!

The RISE Trust Community Hub
01249 463040
Open Monday- Friday
8.30am-3.30pm

Reach
Include
Support
Enable

The RISE Trust provides services for children, young people and families in the North Wiltshire area .

We offer non-judgemental, impartial, friendly advice and we are always there for you! Our services are being developed in response to community needs.

The RISE Trust is a local Chippenham charity supporting families, children and young people children. We provide a range of support from caring, skilled, committed and enthusiastic staff and we are always happy to help you.

Did you know that The RISE Trust are here for you while you have a family and bring them up? From pre-school years, into school and beyond we will help you give your child the best possible support in life. We are trauma trained and can answer your questions and if we can't, we will find someone who can!

Our services currently:

- Pre-school care for children aged 2-5
- Play and learning sessions including baby massage; Healthy Movers; Ready, Steady, School
- Primary school mentoring
- Supported Contact Centre
- Youth services across North Wiltshire
- Parent Support Advisor in primary schools

Please ask for further information

Five to Thrive



Parenting can be a challenge and demanding for the majority of parents at some point in their child's life. Early years are a crucial point of a child's life and learning journey. We will listen and signpost...

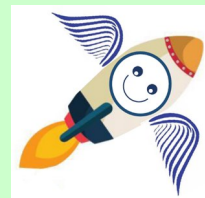
All our support is based on the Five to Thrive Principles. These are five key aspects of parenting that support healthy brain development.



RISE Pre-school

Our RISE pre-school is situated in Chippenham

We are a 'good' setting and offer a variety of carefully thought out areas both inside and outdoors, that are well resourced to excite our 2-5 year olds in their early learning.



Mentoring in schools

Children can be in need of someone to talk to especially if they are in a busy household. Trained volunteers meet children in primary schools weekly to offer a listening ear. Sometimes children do not have someone who will just listen and support them. This service is free to schools. If you would be interested in volunteering for this please call 01249 463040.

Youth services

The RISE youth team provide a range of youth work sessions in North Wiltshire based in the community — both in safe spaces and through detached work. We work with a range of agencies to enable young people to live safer, happier lives. We can also provide one to one mentoring...



Contact Centre



Sometimes children become separated from family members for lots of different reasons.

The Contact Centre is a safe, friendly and neutral place where children from separated families can spend time with their non-resident parent. It is a child-centred environment that puts the needs of children first. Please contact us on 01249 463040.